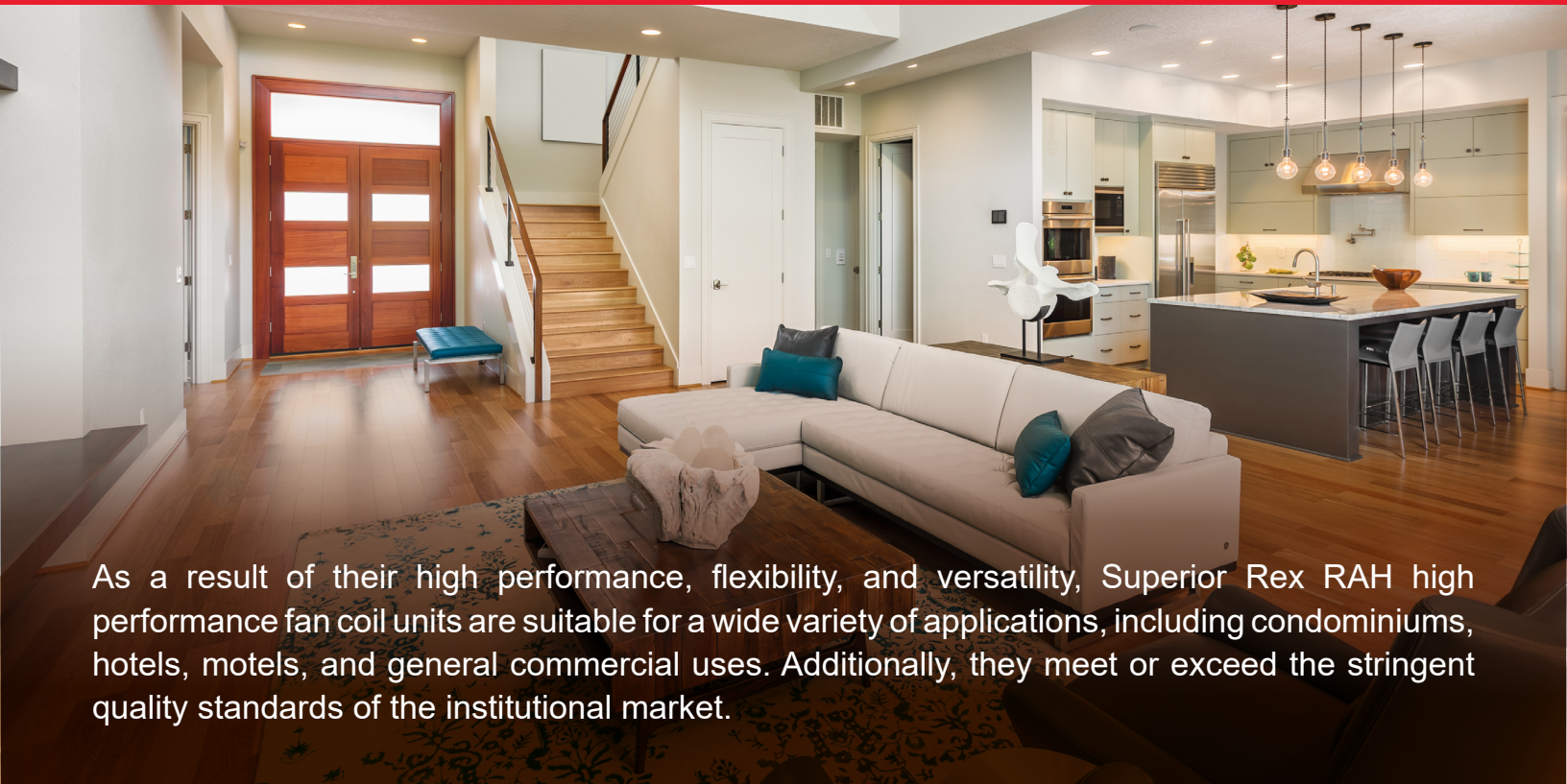
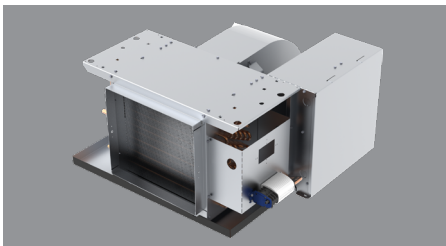


RAH SERIES A: HIGH PERFORMANCE HORIZONTAL FAN COILS

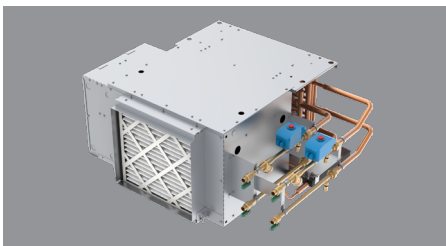


As a result of their high performance, flexibility, and versatility, Superior Rex RAH high performance fan coil units are suitable for a wide variety of applications, including condominiums, hotels, motels, and general commercial uses. Additionally, they meet or exceed the stringent quality standards of the institutional market.



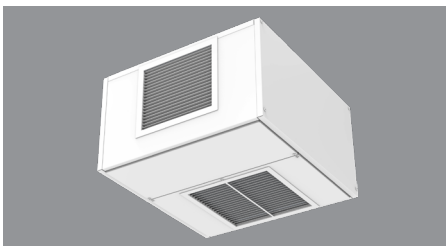
RAHO High Performance Concealed Free Return

CFM Range 600 to 2,400	Max ESP Up to 0.90"	Max Coil Rows Up to 8 rows	Utilizes the ceiling space as the return plenum
----------------------------------	-------------------------------	--------------------------------------	---



RAHR High Performance Plenum Return

CFM Range 600 to 2,400	Max ESP Up to 0.95"	Max Coil Rows Up to 8 rows	Includes built-in plenum for ducted return air and an optional telescoping bottom access panel
----------------------------------	-------------------------------	--------------------------------------	--



RAHC High Performance Exposed Cabinet

CFM Range 600 to 2,400	Max ESP Up to 0.90"	Max Coil Rows Up to 8 rows	Includes stamped louver supply and return grilles and a powder coat finish
----------------------------------	-------------------------------	--------------------------------------	--

FAN COILS: HIGH PERFORMANCE HORIZONTAL SERIES A

STANDARD FEATURES*

Construction

All Units

- AHRI 440 certified and labeled
- Galvanized steel construction
- 1/2" thick fiberglass insulation
- 1 1/2" duct discharge collar
- Holes are provided at four points for hanging units

Plenum Units

- Integral filter rack with 1" throwaway filter
- Integral rear ducted return - field reversible to bottom return

Exposed Units

- Single deflection rear return grille
- Double deflection discharge grille
- Durable powder coat paint
- 18 gauge cabinet construction

Coils

- AHRI 410 certified and labeled
- Cooling - 3, 4 or 6 row chilled water or DX, heat pump compatible
- Heating - 1, 2, 3 or 4 row hot water or 1 or 2 row steam - reheat or preheat position
- 8 total rows of cooling and heating coils maximum
- 3/8" O.D. seamless copper tubes
- 0.012" tube wall thickness
- High efficiency aluminum fin surface for optimizing heat transfer, pressure drop and carryover
- Left or right hand connections
- Manual air vent

Drain Pans

- Single wall, galvanized steel, externally insulated – fire retardant and antimicrobial closed cell foam
- Sloped to drain connection
- Tool-free removable
- 7/8" O.D. primary drain connection

Fan Assemblies

- Forward curved, DWDI centrifugal type
- 115 volt, single phase, three tap PSC motors
- Quick disconnect motor connections
- Removable fan(s)/motor(s) for service

Electrical

- cETL listed for safety compliance
- Electrical junction box for field wiring terminations
- Terminal block for field connections

Electric Heat

- cETL listed as an assembly for safety compliance
- Integral electric heat assembly with removable electric heat rack for easy service
- Automatic reset primary and back-up secondary thermal limits
- Single point power connection
- Electrical enclosure with hinged bottom access door and removable side access panel

OPTIONAL FEATURES*

Construction

All Units

- Foil faced fiberglass insulation
- Elastomeric closed cell foam insulation

Plenum Units

- Bottom return
- Mixing box with top/rear or rear/bottom dampers - field reversible
- Damper actuator
- Spare 1" throwaway filters
- 1" and 2" pleated filters

Exposed Units

- Single deflection bottom return grille
- Ducted supply
- Ducted rear return

Coils

- 1/2" O.D. seamless copper tubes
- 0.016" tube wall thickness
- 0.025" tube wall thickness
- Automatic air vents
- Stainless steel coil casings

Drain Pans

- Stainless steel with external insulation
- 5/8" O.D. secondary drain connection
- Auxiliary drip pan

Fan Assemblies

- 208-230 & 277 volt, single phase, three tap PSC motors
- ECM™ motors

Electrical

- Side access electrical enclosure
- Silent solid state fan relays
- SCR fan speed controller (only for high speed)
- Toggle disconnect switch
- Condensate overflow switch (drain pan)
- Main fusing
- Unit and remote mounted three speed fan switches
- Fan relay packages
- Control power transformers

Electric Heat

- Door interlocking disconnect switches
- Main fusing
- Silent relay / contactor

Piping Packages

- Factory assembled – shipped loose or pre-installed
- 1/2", 3/4", and 1", 2 way and 3 way normally closed, two position electric motorized valves
- Isolation ball valves with memory stop
- Fixed and adjustable flow control devices
- Unions and P/T ports
- Modulating control valves

Thermostats

- Remote mounted digital display or programmable
- 2 and 4 pipe control sequences
- Automatic and manual changeover
- Integral three speed fan switches

* See individual models for their exact set of available features.